

The background is a dark blue gradient with several thin, white, parallel diagonal lines running from the bottom-left towards the top-right. The lines are slightly irregular and spaced out, creating a sense of movement or data flow.

ERROR REPROCESSING TOOL BROCHURE



	Error Reprocessing Tool Brochure		
	Release Date:	Document Number: ERT-BROC-001	Revision 01


Table of Contents

1	Introduction	4
2	System Requirements	5
4	Key Features	6
5	How ERT Works	7
5.1	Intended Audience.....	7
5.2	Inbound Use Case.....	7
5.3	Outbound Use Case.....	8
6	Customer Testimonials	9
7	Support and Maintenance	10
8	Contact Information	11

	Error Reprocessing Tool Brochure		
	Release Date:	Document Number: ERT-BROC-001	Revision 01


List of Figures

Figure 1 - Inbound Use Case.	6
Figure 2 - Outbound Use Case.	7

	Error Reprocessing Tool Brochure		
	Release Date:	Document Number: ERT-BROC-001	Revision 01

1 Introduction


Error Reprocessing Tool (ERT) is aimed to fulfil and provide extended support for the functionality not provided by Opcenter and CN MOM. It provides a centralized Message Forwarder system that facilitates the logging, viewing, and re-processing of failed messages from multiple interfaces that connect Manufacturing Execution Systems (MES) and Enterprise Resource Planning (ERP) systems, as well as other local systems by interacting with CN MOM. The ERT application streamlines the exchange of interface messages between Shopfloor supervisors, admins, IT consultants, and Opcenter, enhancing the overall efficiency of the process.

	Error Reprocessing Tool Brochure		
	Release Date:	Document Number: ERT-BROC-001	Revision 01

2 Key Features

Customers consistently commend ERT for its exceptional ability to optimize message exchange processes, significantly bolster operational efficiency, and elevate the overall workflow to new heights of productivity and effectiveness

- ❑ **Comprehensive Error Handling:** ERT efficiently logs, views, and reprocesses failed messages between ERP, MES, and other local systems interacting with Opcenter Execution, serving as a vital bridge for seamless data exchange
- ❑ **Enhanced System Maintainability:** This custom tool aids in reprocessing system and data errors with high efficiency, contributing to improved system maintainability and mitigating time and costs associated with error resolution.
- ❑ **Centralized Management:** Acting as a centralized system, ERT records and manages failed messages from various touchpoints, simplifying error management for Shopfloor supervisors and IT Administrators.
- ❑ **Detailed Error Logging:** Errors from inbound and outbound messaging to and from Opcenter Execution are meticulously logged, providing a comprehensive overview of error occurrences and patterns.
- ❑ **Versatile Actions:** Users can perform various actions such as Reprocess, Archive, Unarchive, and Purge, facilitating efficient error resolution and system maintenance.
- ❑ **Seamless Integration:** ERT seamlessly integrates with MoM Connect Endpoint for message dispatch upon reprocessing, ensuring smooth data flow across systems.
- ❑ **User-Friendly Interface:** With a user-friendly interface, ERT allows easy viewing, filtering, and exporting of error details, streamlining error management processes.


	Error Reprocessing Tool Brochure		
	Release Date:	Document Number: ERT-BROC-001	Revision 01

3 System Requirements

Below are the minimum system requirements:

- OS: Windows 10 or latter.
- RAM: Min 8 GB.
- SSD or HDD: 250 GB.
- .NET Framework 4.7.8.
- ASP.NET Core 6.0 hosting bundle.
- IIS 6 and or higher.
- Microsoft SQL Server 2016 and or higher (Same as Opcenter Execution X CoreR).
- SQL Server Management Studio (SSMS).
- Oracle Database Client 18c and or higher. (Same as Opcenter Execution CoreOpcenter EX CR).
- Oracle SQL Developer.

4

	Error Reprocessing Tool Brochure		
	Release Date:	Document Number: ERT-BROC-001	Revision 01

4 How ERT Works

After the successful installation of the ERT, the user will be able to launch the web client by accessing the link that is provided. Please note that this link will only be made available once the installation process has been completed and will be dependent on the server IP address as well as the port number. To ensure seamless functionality of the ERT application, system administrators must ensure that the ports that have been configured for its use are enabled.

After launching the ERT application, the user will be directed to the Login Screen. The ERT application has been designed to limit access to other pages, allowing access only to those who have logged in. In the absence of valid login credentials, the user will be automatically redirected to the Login Screen.

4.1 Intended Audience

The ERT application will be utilized by Shopfloor supervisors, admins, and IT consultants who are responsible for the sending and receiving of interface messages to and from Opcenter.

4.2 Inbound Use Case

When a message to Opcenter is sent and an error occurs, either when receiving the message or while the message is submitted to Opcenter, the error is logged in an Error Staging Table. ERT application allows the user to perform reprocess action on demand.

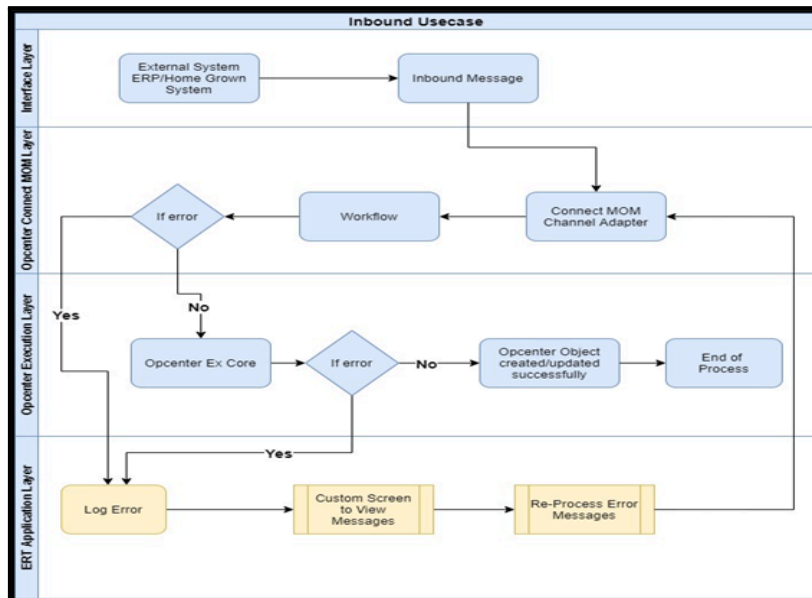


Figure 1 - Inbound Use Case.

4.3 Outbound Use Case

When a message is sent from Opcenter and if a system error occurs, the message is logged as an error and is logged in the Error Staging Table. ERT application allows the user to perform reprocess action on demand.

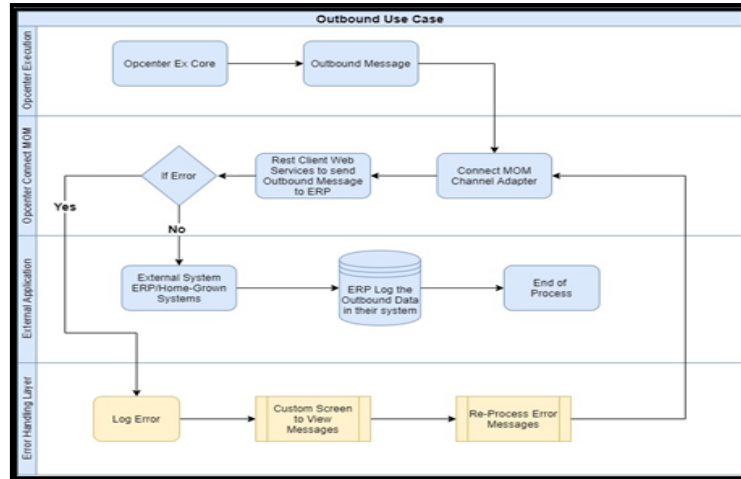




Figure 2 - Outbound Use Case.

	Error Reprocessing Tool Brochure		
	Release Date:	Document Number: ERT-BROC-001	Revision 01


5 Customer Testimonials

Customers consistently commend ERT for its exceptional ability to optimize message exchange processes, significantly bolster operational efficiency, and elevate the overall workflow to new heights of productivity and effectiveness.

	Error Reprocessing Tool Brochure		
	Release Date:	Document Number: ERT-BROC-001	Revision 01

6 Support and Maintenance

Dhruv provides comprehensive support and maintenance services for ERT, including installation assistance, license key management, and troubleshooting. Customers can contact Dhruv's support team for prompt assistance.

	Error Reprocessing Tool Brochure		
	Release Date:	Document Number: ERT-BROC-001	Revision 01

7 Contact Information

For inquiries, support, or additional information about ERT, please contact Dhruv's customer support team:

- ✉ Email ID: info@dhruvts.com
- ☎ Phone: +91 80 231 40317.